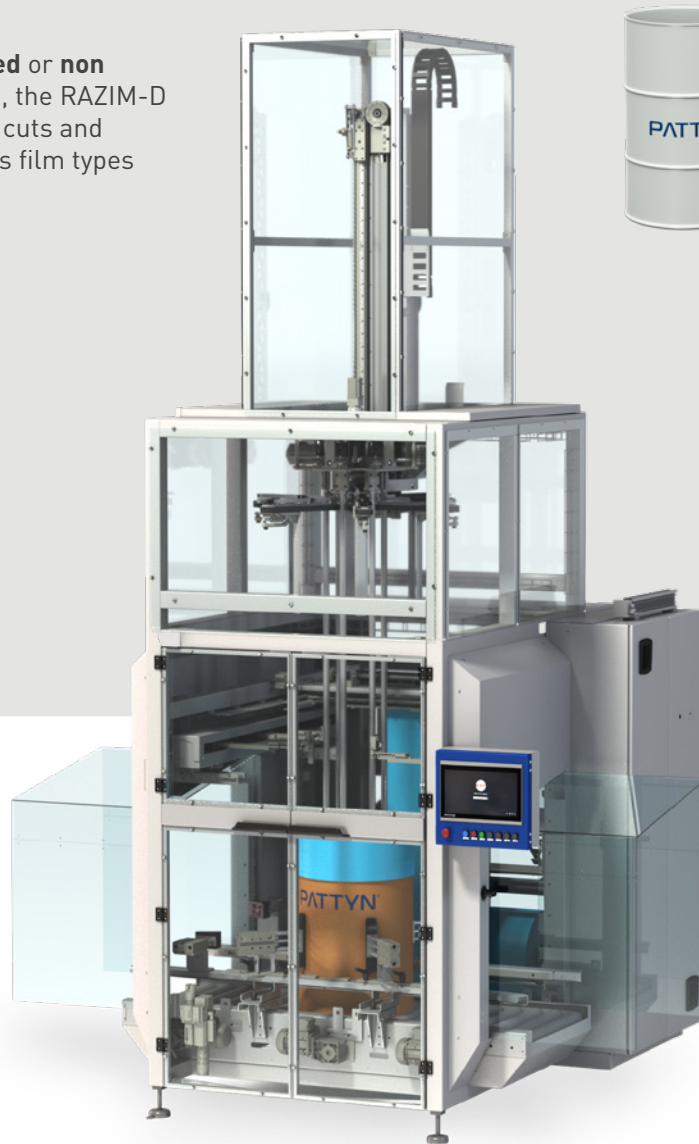


BAGMAKER INSERTER FOR DRUMS RAZIM-D

From a roll of **gusseted** or **non gusseted** tubular film, the RAZIM-D automatically makes, cuts and inserts bags of various film types into drums.



INTEGRATED
MECHANICAL
PLUNGER

Specially designed for all types of drums

- **Integrated mechanical plunger.**
- Different types of **special film**, such as aluminium coated film and high barrier film.
- Double liner

Hygienic design

- Up to **4** drums/minute.
- Designed for maximum cleaning accessibility.
- Intuitive 15" HMI for easy operation



Watch our videos
at pattyn.com

TECHNICAL SPECIFICATIONS RAZIM-D

Leakproof bag

- Impulse sealing for a controlled, clean and leakproof seal.

Failsafe bag opening

- Mechanical grippers instead of delicate vacuum cups.

Perfectly controlled bag insertion

- The integrated mechanical plunger ensures an optimised bag insertion.

For specific needs and specific products

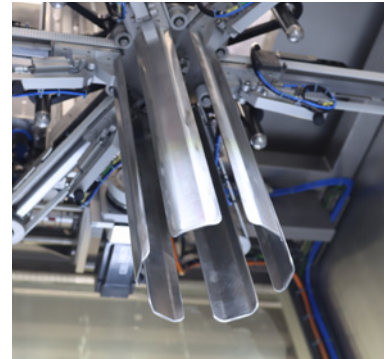
- Use of different types of special gusseted and non gusseted tubular film for paint powders & food ingredients.
- Insertion of two bags in one drum as required for the high demanding industries.

Standard equipped with:

- Integrated mechanical plunger.
- Maintenance free V-shaped guillotine knife for a perfect film cut.
- Intuitive 15" HMI for easy operation



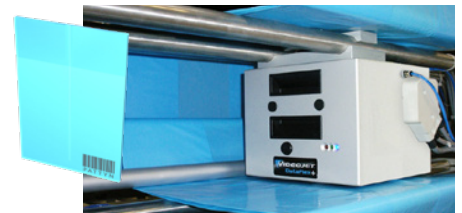
Mechanical grippers



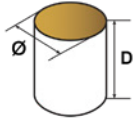
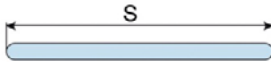
Integrated mechanical plunger

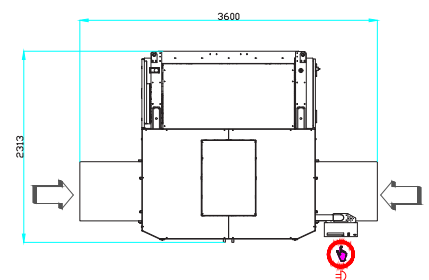


15" HMI



Optional thermo transfer printer

CONTAINER SPECIFICATIONS (For other dimensions, please contact Pattyn)	
Type	Drums
Range drums (diam x D) mm	Mono footprint / mono height
	Min. Ø 350 x 400 (D)
	Max. Ø 600 x 950 (D)
	Outside dimensions
FILM SPECIFICATIONS	
Type	Gusseted or non gusseted tubular film* : aluminium coated film, multi-layer high barrier film
* When running non gusseted tubular film: Max. S = 840 mm (S = half of circumference of the film).	
Thickness	Min. 15 µm
Weight of film roll	Max. 60 kg *
Outside diameter film roll	Max. 450 mm *
Inside diameter of core	76 mm
<i>* If a film docking station is used, the max. weight of film roll & outside diameter of film roll will have to be reconfirmed.</i>	
OUTPUT AND CONSUMPTION	
Output single liner	Up to 4 drums/min
Output double liner	Please contact Pattyn
Installed power	11,5 kW
Voltage	3 x 400 V + N + E / 50 Hz
Air supply	6 bar / 1/2" min
Air consumption	60 NI / cycle
Weight	2300 kg
OPTIONS (More options are available, please contact Pattyn)	
Advanced stainless steel execution	Two active seal bars
Mechanical bag-in-drum detection	Film docking station
Film roll trolley	
Cross seal unit (only for gusseted film)	
Thermo transfer printer for real time printing on bags (traceability)	
Multiple drum heights (For limited range only, to be checked by Pattyn)	



Machine height **4870 mm**

Machine height as reference only,
depending on drum height.

Pattyn Belgium nv
Industriepark 'Blauwe Toren'
Hoge Hul 2, 8000 Brugge - Belgium

T +32 (0) 50 450 480
info@pattyn.com
www.pattyn.com



The description, pictures and information given have an indicative value. We reserve the right to make changes without notice. Information and content is property of Pattyn. For customised executions please contact Pattyn. RAZIM-D 2024 - V01

PATTYN[®]

Turnkey solutions for industrial packaging.