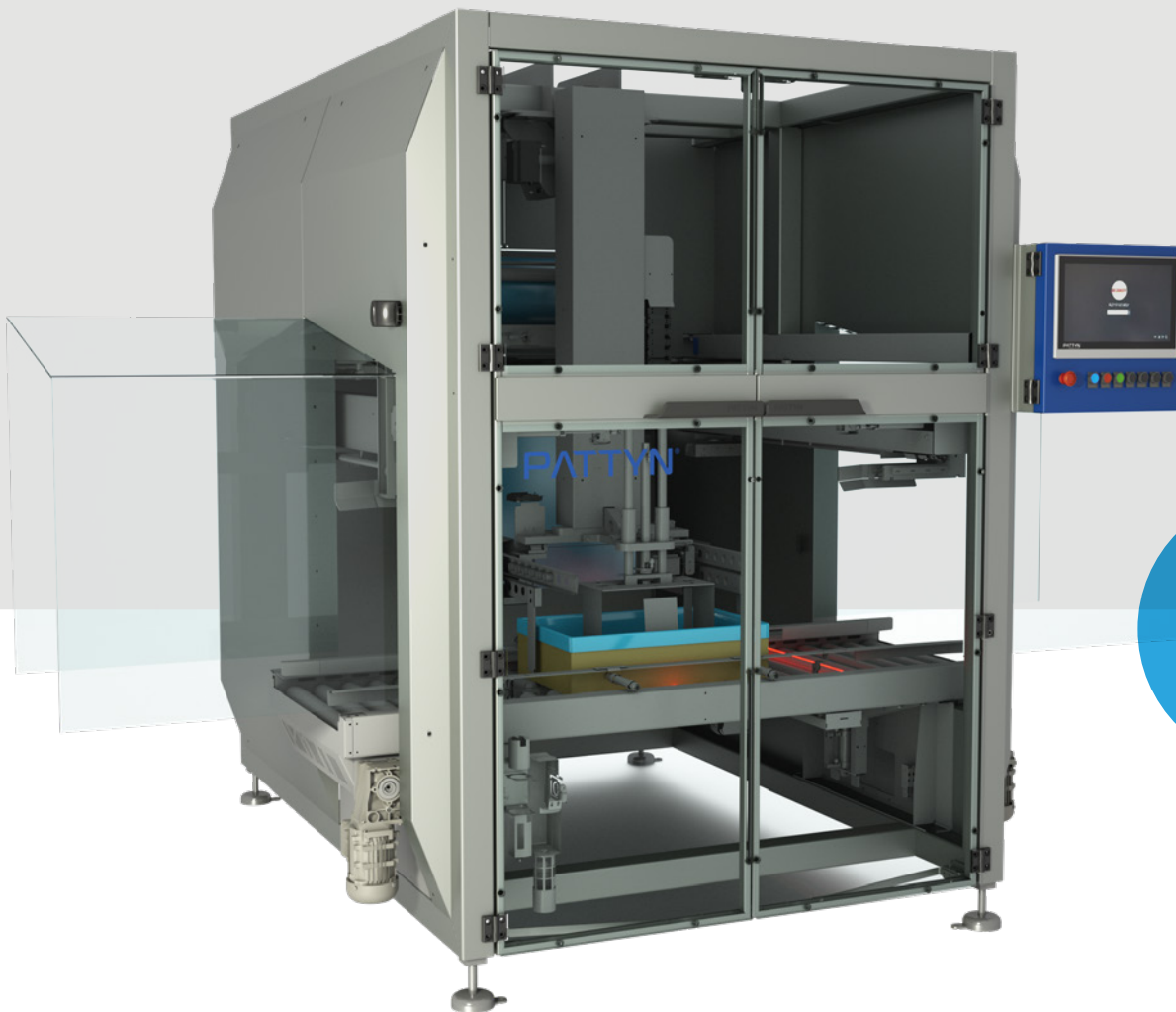
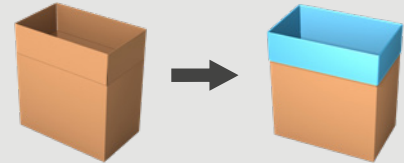


## BAGMAKER INSERTER RAZIM-P

From a roll of **gusseted** or **non gusseted** tubular film, the RAZIM-P automatically makes, cuts and inserts bags into crates, clamshell boxes and low cartons.



VERSATILE  
BAG  
INSERTION

### For crates & clamshell boxes

- Integrated mechanical plunger.
- Versatile bag insertion

### Hygienic design

- Up to **16** cases/minute.
- Designed for maximum cleaning accessibility.



Watch our videos  
at [pattyn.com](http://pattyn.com)

# TECHNICAL SPECIFICATIONS RAZIM-P

## Leakproof bag

- Impulse sealing for a controlled, clean and leakproof seal.

## Failsafe bag opening

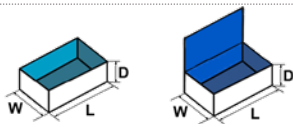
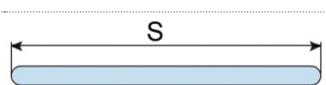
- Mechanical grippers instead of delicate vacuum cups.

## Perfect balance of speed & versatility

- High speed to match your production rate
- Use of different types of gusseted and non gusseted tubular film
- Use of multi-layer high barrier film for different applications.
- Possibility to work with crates, clamshell boxes & low cartons

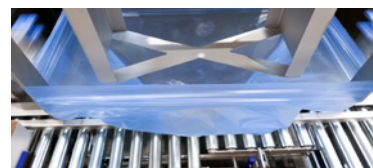
### Standard equipped with:

- Integrated mechanical plunger.
- Maintenance free V-shaped guillotine knife for a perfect film cut.
- 15" HMI for easy operation.
- Remote Access Point (one per line).

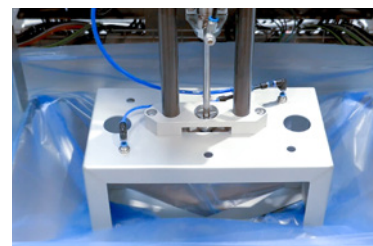
| CONTAINER SPECIFICATIONS (For other dimensions, please contact Pattyn)                                    |  |
|---|--|
| Type  | Cases  |
| Range (L x W // D) mm   | <b>Mono or multi footprint (L x W)</b><br>Min. 12" (L) x 7½" (W) // 3¾" (D)<br>Max. 23 ½" (L) x 15 ¾" (W) // 10" (D) |
|                          | Outside dimensions   |
| FILM SPECIFICATIONS   |  |
| Type  | <b>Gusseted or non gusseted tubular film*</b> :<br>aluminium coated film, multi-layer high barrier film              |
| <b>* When running non gusseted tubular film: Max. S = 840 mm (S = half of circumference of the film).</b> |                                   |
| Thickness   | Min. 15 µm   |
| Weight of film roll   | Max. 132 lbs   |
| Outside diameter film roll  | Max. 17 ¾"   |
| Inside diameter of core   | 3"   |
| OUTPUT AND CONSUMPTION  |  |
| Output single liner   | Up to 16 c/min when using gusseted film<br>Up to 8 c/min when using non gusseted film                                |
| Output double liner   | Please contact Pattyn  |
| Installed power   | 11,5 kW  |
| Voltage   | 3 x 400 V + N + E / 50 Hz  |
| Air supply  | 6 bar / 1/2" min   |
| Air consumption   | 60 NI / cycle  |
| Weight  | 4189 lbs   |
| OPTIONS (More options are available, please contact Pattyn)   |  |
| Advanced stainless steel execution  | Two active seal bars   |
| Mechanical bag-in-box detection   | Cross seal unit (only for gusseted film)   |
| Film roll trolley   | 26.5 lbs film roll (only for gusseted film)  |
| Thermo transfer printer for real time printing on bags (traceability)                                     |  |
| Multiple case heights (For limited range only, to be checked by Pattyn)                                   |  |



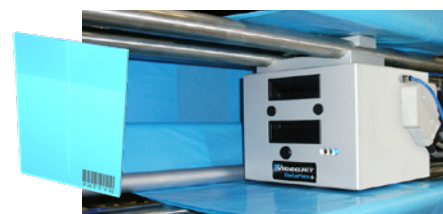
Mechanical grippers



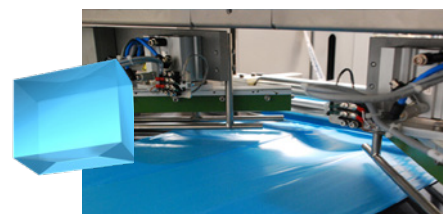
Stepper motor driven spoon module



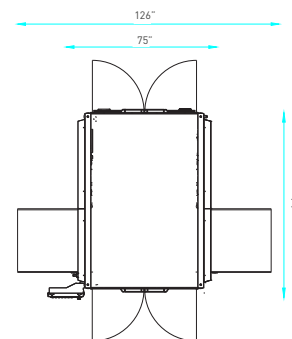
Integrated mechanical plunger



Optional thermo transfer printer



Optional corner seal unit 45°



Machine height 123"

Machine height as reference only,  
depending on case height.

Pattyn North America Inc.  
N56 W24660 N Corporate Circle  
Sussex, WI. 53089 - U.S.A

Ph +1 262-966-0300  
Fax +1 262-966-0312  
SalesUsa@pattyn.com



The description, pictures and information given have an indicative value. We reserve the right to make changes without notice. Information and content is property of Pattyn. For customized executions please contact Pattyn. RAZIM-P 2024- V01

**PATTYN**®

Turnkey solutions for industrial packaging.