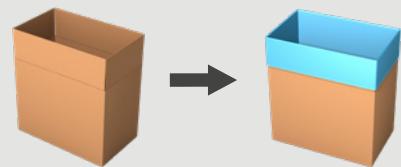


BAGMAKER INSERTER RAZIM-C

From a roll of **gusseted** or **non gusseted** tubular film, the RAZIM-C automatically makes, cuts and inserts bags into cases.



PERFECT
BAG
INSERTION

For special applications

- **Integrated mechanical plunger.**
- Different types of **special film**, such as aluminium coated film and high barrier film.
- Double liner.

Hygienic design

- Up to **12 cases/minute.**
- Designed for maximum cleaning accessibility.

TECHNICAL SPECIFICATIONS RAZIM-C

Leakproof bag

- Impulse sealing for a controlled, clean and leakproof seal.

Failsafe bag opening

- Mechanical grippers instead of delicate vacuum cups.

Perfectly controlled bag insertion

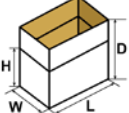
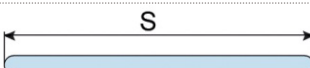
- Case flap holders for perfect case flap positioning.
- Integrated mechanical plunger.

For specific needs and specific products

- Perfect bag insertion as required for crystallizing products such as cocoa butter, CBS, fondant sugar.
- Use of different types of gusseted and non gusseted tubular film for paint powders & food ingredients.
- Use of multi-layer high barrier film for different applications.
- Insertion of two bags in one box for high demanding industries.

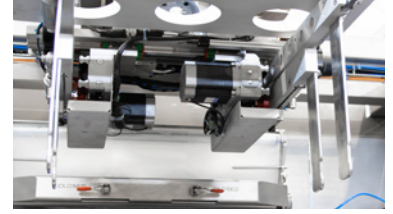
Standard equipped with:

- Integrated mechanical plunger.
- Maintenance free V-shaped guillotine knife for a perfect film cut.
- 15" HMI for easy operation.
- Remote Access Point (one per line).

| CONTAINER SPECIFICATIONS (For other dimensions, please contact Pattyn) | |
|---|--|
| Type | Cases |
| Range (L x W // D) mm | Mono or multi footprint (L x W) / Mono height Min. 300 (L) x 200 (W) // 200 (D) Max. 600 (L) x 400 (W) // 650 (D) |
|  | Outside dimensions |
| FILM SPECIFICATIONS | |
| Type | Gusseted or non gusseted tubular film* : aluminium coated film, multi-layer high barrier film |
| * When running non gusseted tubular film: Max. S = 840 mm (S = half of circumference of the film). |  |
| Thickness | Min. 15 µm |
| Weight of film roll | Max. 60 kg |
| Outside diameter film roll | Max. 450 mm |
| Inside diameter of core | 76 mm |
| OUTPUT AND CONSUMPTION | |
| Output single liner | Up to 12 c/min when using gusseted film Up to 8 c/min when using non gusseted film |
| Output double liner | Please contact Pattyn |
| Installed power | 11,5 kW |
| Voltage | 3 x 400 V + N + E / 50 Hz |
| Air supply | 6 bar / 1/2" min |
| Air consumption | 60 NI / cycle |
| Weight | 2100 kg |
| OPTIONS (More options are available, please contact Pattyn) | |
| Advanced stainless steel execution | Two active seal bars |
| Mechanical bag-in-box detection | Cross seal unit (only for gusseted film) |
| Film roll trolley | 12 kg film roll (only for gusseted film) |
| Thermo transfer printer for real time printing on bags (traceability) | |
| Multiple case heights (For limited range only, to be checked by Pattyn) | |



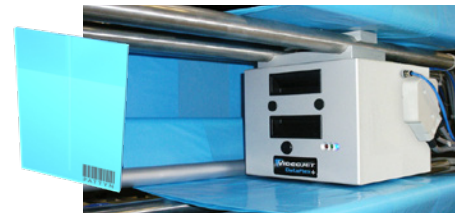
Mechanical grippers



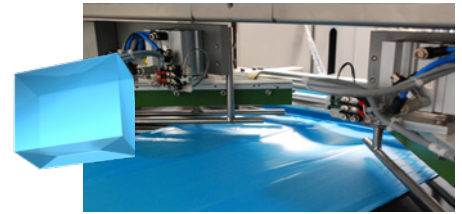
Stepper motor driven spoon module



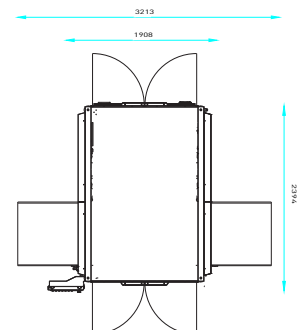
Integrated mechanical plunger



Optional thermo transfer printer



Optional corner seal unit 45°



Machine height 3731 mm

Machine height as reference only,
depending on case height.

Pattyn Belgium nv
Industriepark 'Blauwe Toren'
Hoge Hul 2, 8000 Brugge - Belgium

T +32 (0) 50 450 480
info@pattyn.com
www.pattyn.com



The description, pictures and information given have an indicative value. We reserve the right to make changes without notice. Information and content is property of Pattyn. For customised executions please contact Pattyn. Razim-C 2024 - V01

PATTYN[®]

Turnkey solutions for industrial packaging.